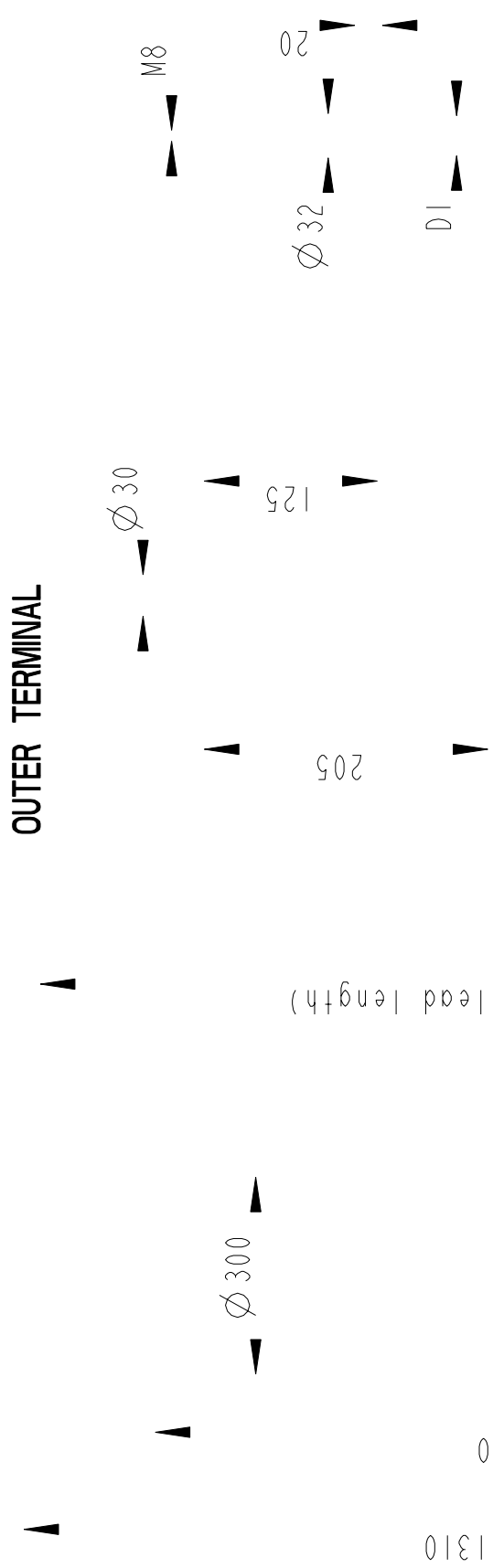


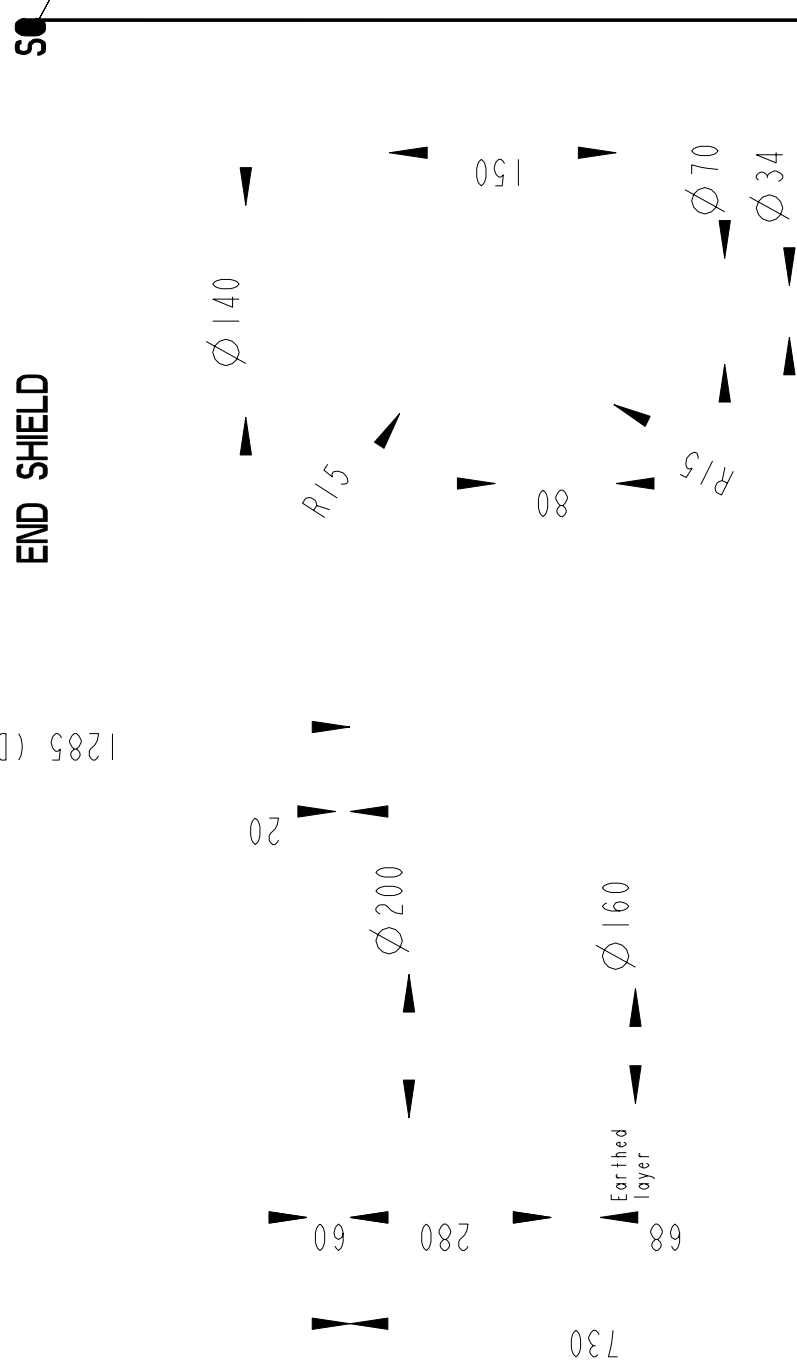
OUTER TERMINAL



Bushing Data:

Rated Voltage	170	kV
Phase to Ground Voltage	123	kV
Dry Lightning Impulse I, 2/50μs	550	kV
Wet power frequency AC	230	kV
Routine test I min dry 50Hz	260	kV
Rated Current	1250	A
Creepage Distance	3430±100	mm
Creepage Distance Protected	1350	mm
Mass	110	kg

END SHIELD



Ordering Data:

BUSHING	COLOUR AIR INSULATOR
LF123143-M	BROWN
-N	LIGHT GREY
OUTER TERMINAL	
LF 170 002-B	Cu, Ø 30, L=125
LF 170 001-B	Al, Ø 30, L=125
OTHER TYPES ON REQUEST	
INNER TERMINAL FOR STRANDED CABLE	
For brazing	Conductor area DI
LF 170 011-T	up to 285mm ² Ø29
LF 170 011-V	Undrilled with pilot hole Ø5
SOLID ROD CONNECTOR	
LF 170 052 -AU	for Alt.1
LF 170 052 -AX	for Alt.2

SO

We reserve all rights in this document and in the information contained therein. Reproduction, use or disclosure to third parties without express authority of ABB is strictly forbidden.

Based on	Reg. No.	Title
Prepared	Responsible department	GOB 550-1250-0.3
Lönnord	COM/BK	
Approved	Take over department	
Johansson	Database	
Design engineering review		
Helund		
ABB ABB Components		Document No. 2751369-214
		Page 1(1)
		Language

Test tap



Ø 290

Ø 335

Ø 160

R/5

Ø 70

Ø 34

R/5

Ø 140

1050

1310

1285 (Draw lead length)

Ø 300

125

Ø 32

DI

M8

M8

Ø 32

Ø 28

28

68

730

280

60

20

150

up to 285mm²

Undrilled with pilot hole Ø5

Conductor area DI

Cu, Ø 30, L=125

Al, Ø 30, L=125

LIGHT GREY

BROWN

COLOUR AIR INSULATOR